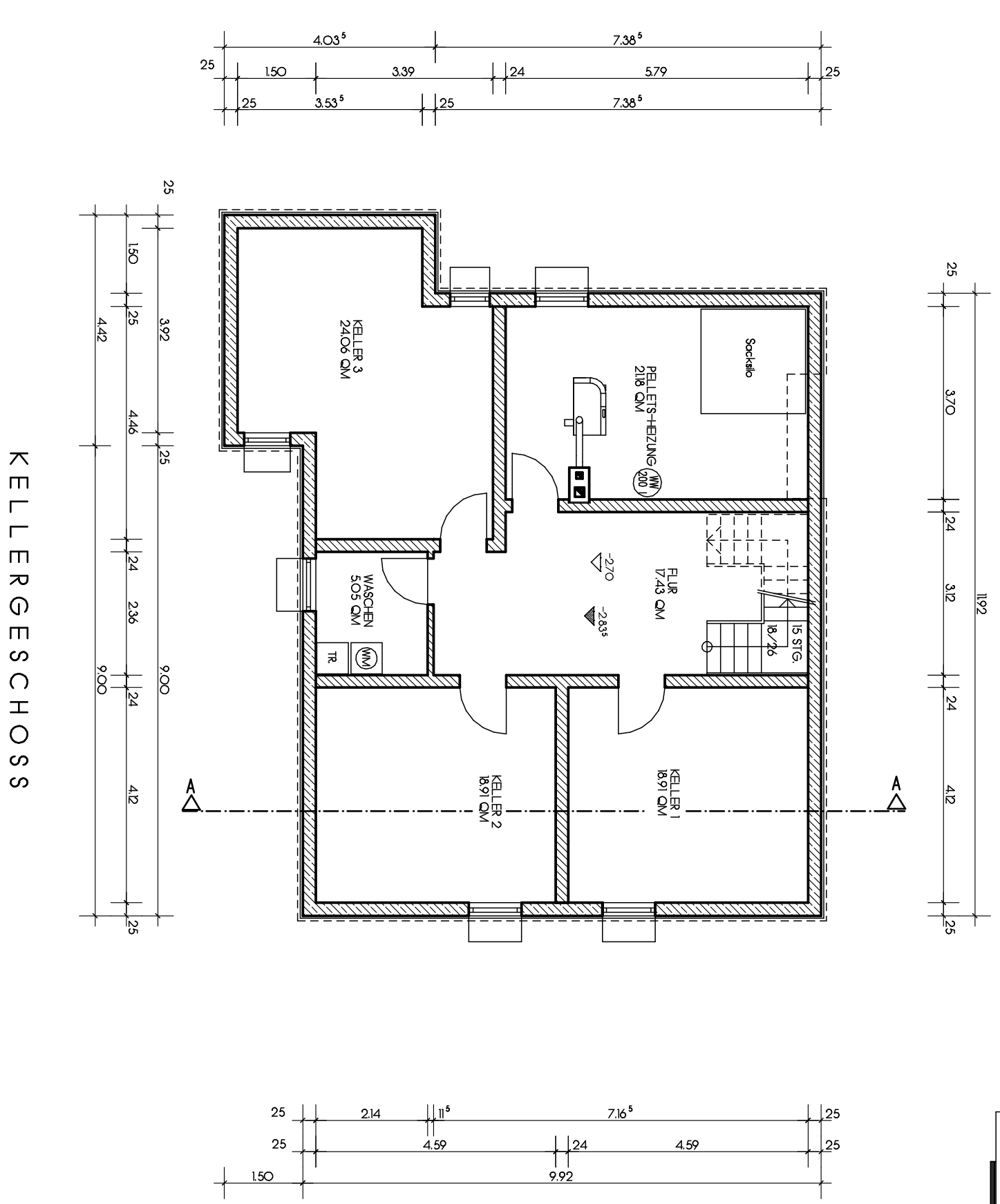
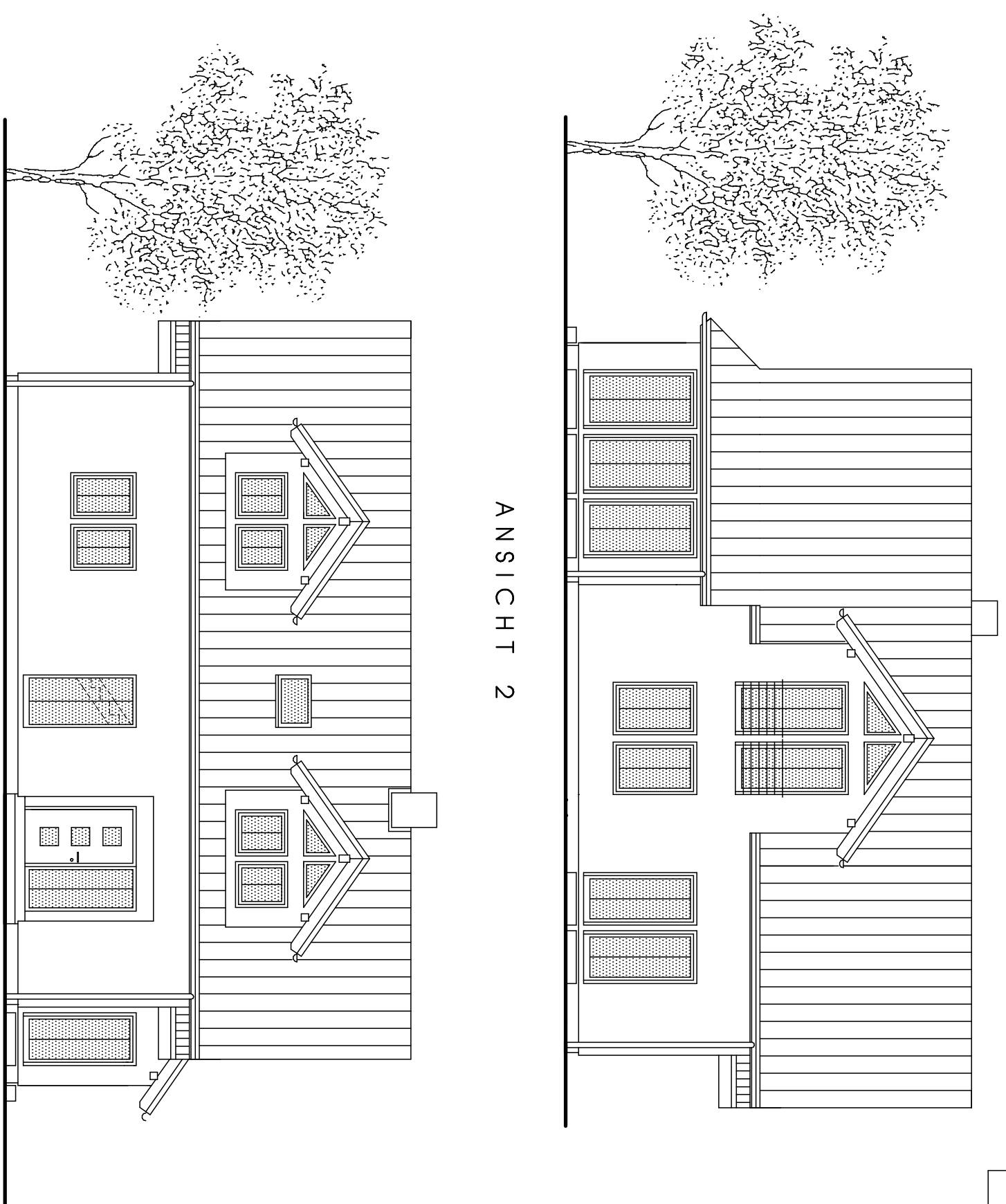


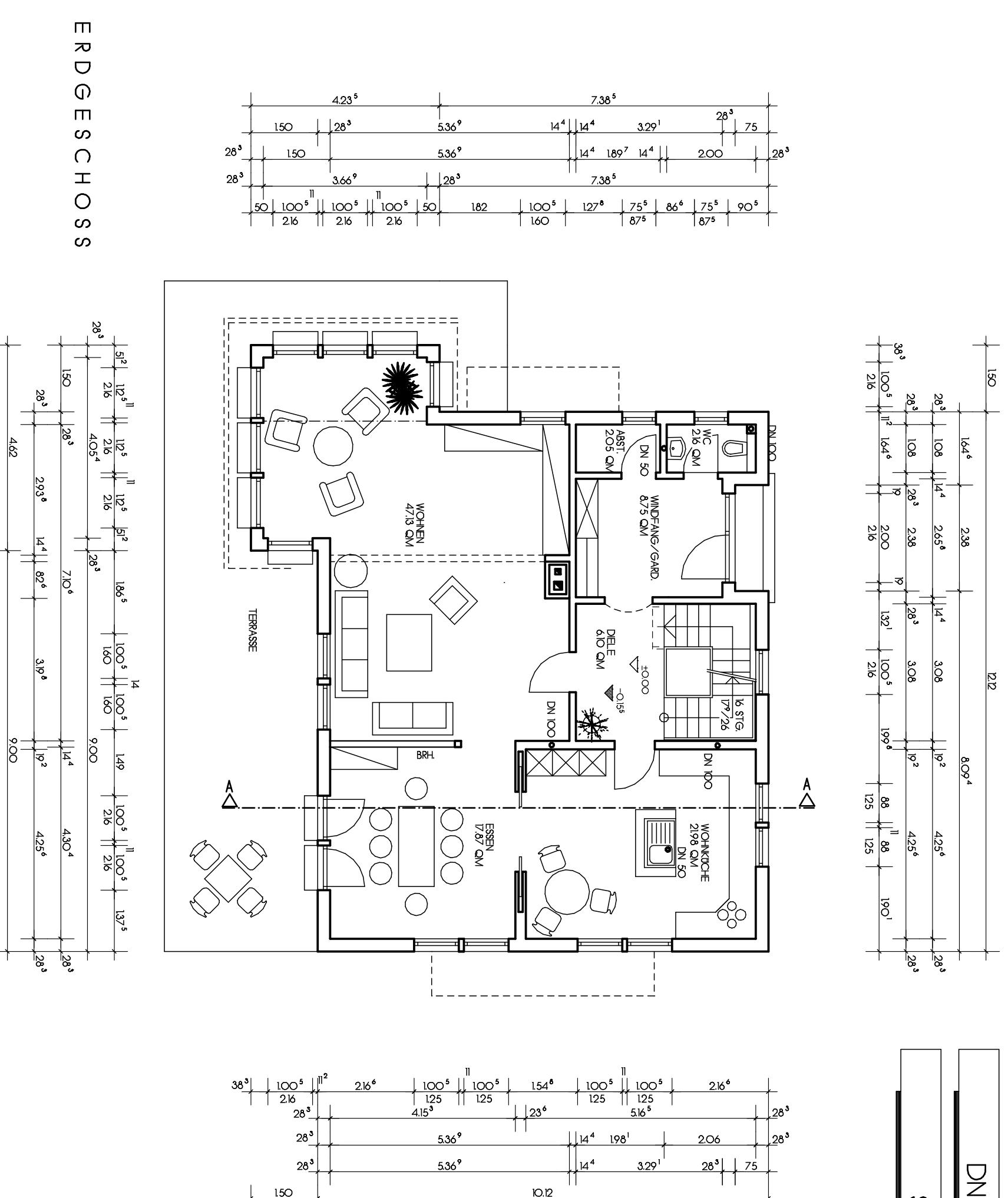
TOP LINE 130
DN. 35° / KN. 0,80 M
STAND 17.012006



TOP LINE 130
DN. 35° / KN. 0,80 M
STAND 17.012006



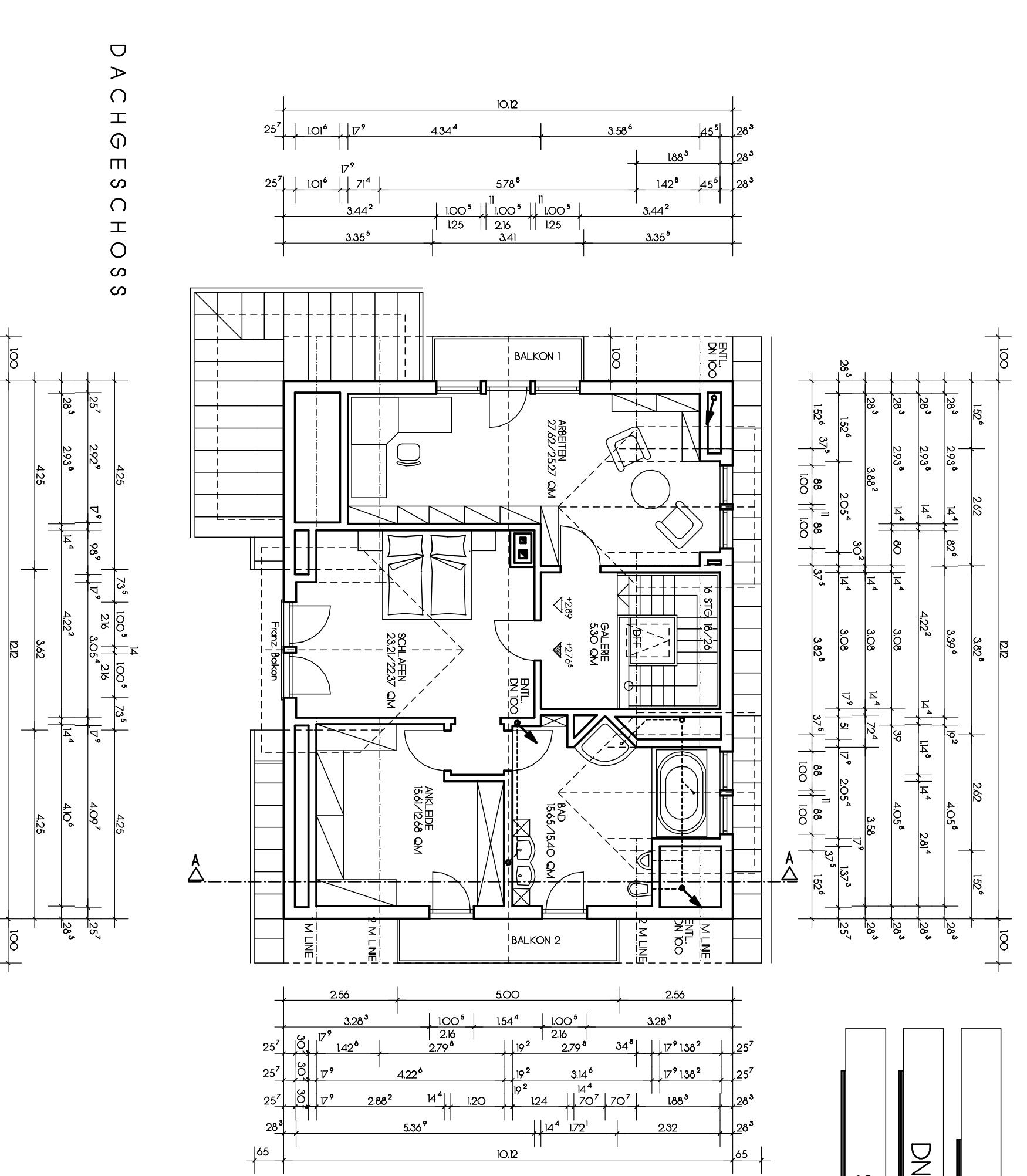
TOP LINE 130
DN. 35° / KN. 0,80 M
STAND 17.012006



TOP LINE 130
DN. 35° / KN. 0,80 M
STAND 17.012006



TOP LINE 130
DN. 35° / KN. 0,80 M
STAND 17.012006



TOP LINE 130
DN. 35° / KN. 0,80 M
STAND 17.012006

